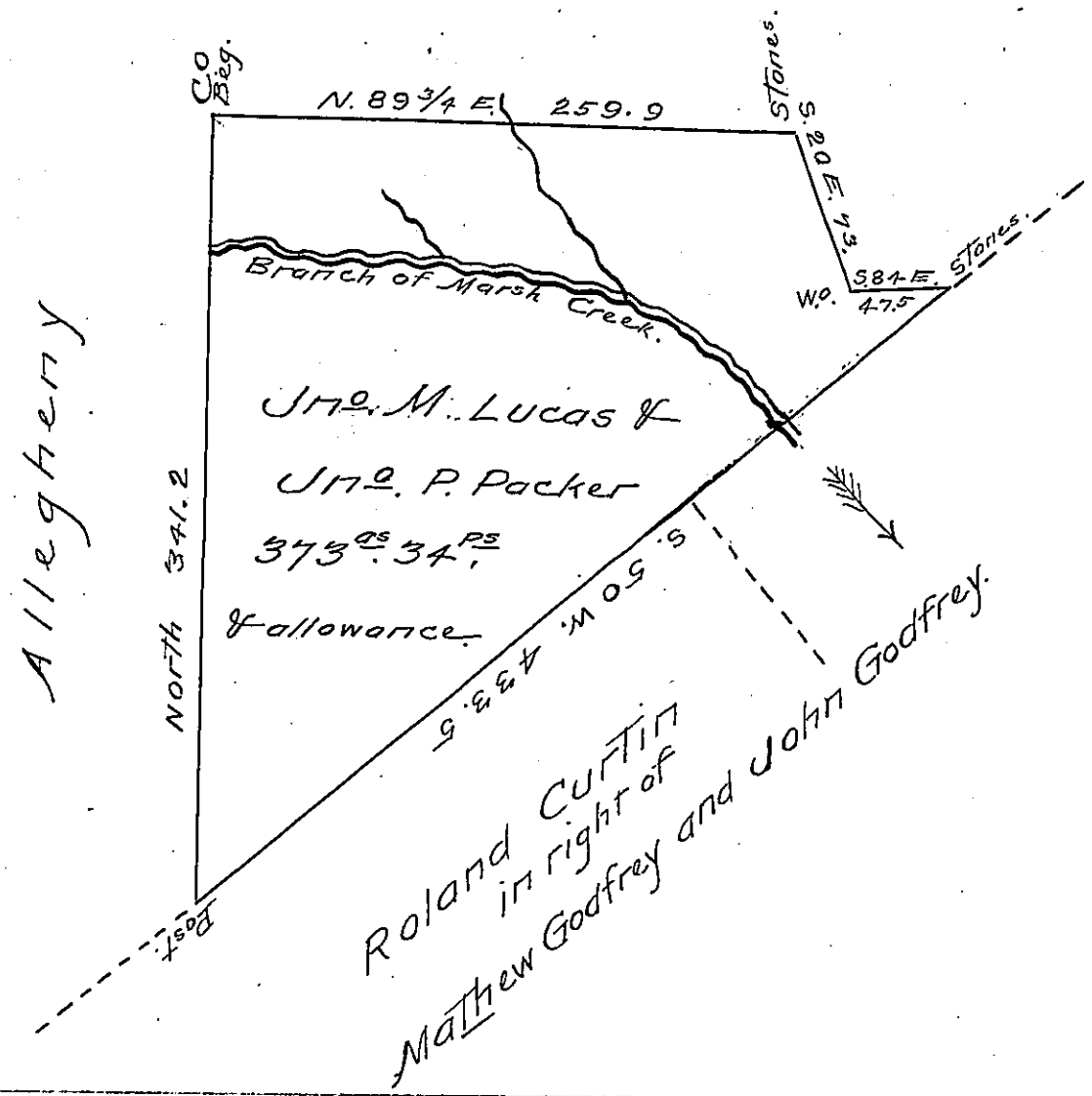


Mountain.



Draft of a Tract of Land situate on a Branch of Marsh creek in Howard township Centre County - containing three hundred seventy three acres & thirty four perches and allowance of six per cent for roads &c. Surveyed 18th July A.D. 1842 in pursuance of a Warrant granted to John M. Lucas & John P. Packer dated June 29th 1842 for 373⁰⁵-20^{PS}.

To Jacob Sallade Esq. } Per Jacob Bollinger D.S.
 Surveyor General }

IN TESTIMONY that the above is a copy of the original remaining on file in the Department of Internal Affairs of Pennsylvania, made conformably to an Act of Assembly approved the 16th day of February, 1833, I have hereunto set my Hand and caused the Seal of said Department to be affixed at Harrisburg, this Twenty ninth day of September 1905.

Jacob P. Brown
 Secretary of Internal Affairs.